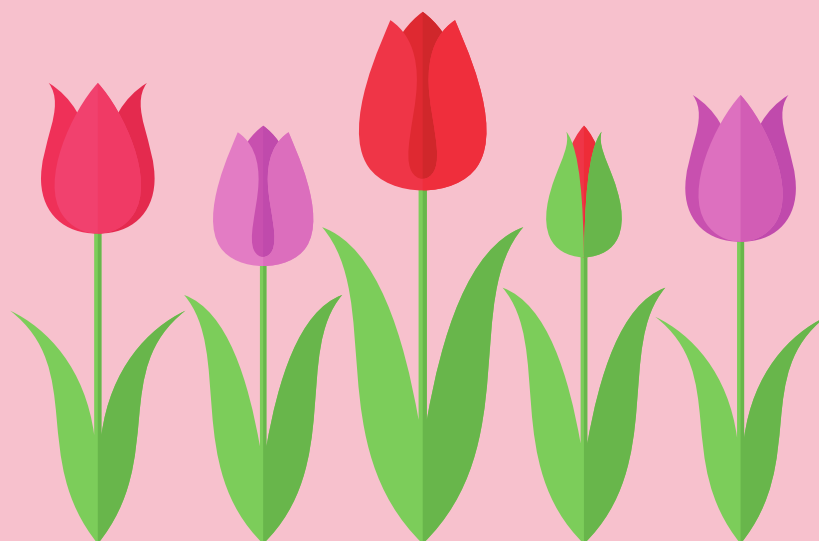


MAY 2022

#AWARENESSCALENDAR

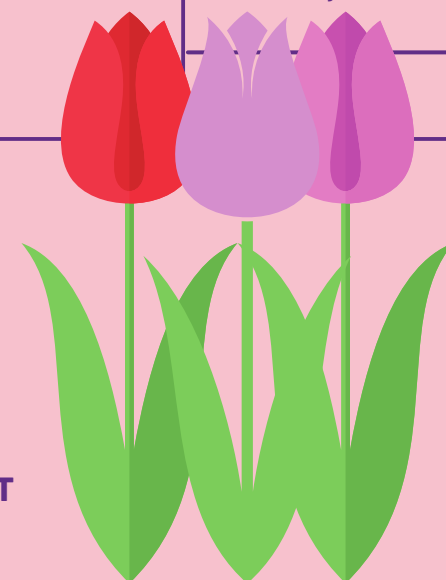


SUNDAY	MONDAY	TUESDAY	WEDNESDAY	THURSDAY	FRIDAY	SATURDAY
1 <u>Dawn Chorus Day.</u>	2 <u>World Tuna Day.</u> <u>May Day.</u>	3 <u>World Asthma Day.</u> <u>World Press Freedom Day.</u>	4 <u>Star Wars Day.</u> <u>Firefighters' Memorial Day.</u> <u>World Maternal Mental Health Day.</u>	5 <u>International Day of The Midwife</u> <u>World Maternal Mental Health Day.</u>	6	7 <u>Free Comic Book Day.</u> <u>World AS Day.</u>
8 <u>World Ovarian Cancer Day.</u> <u>World Red Cross and Red Crescent Day.</u>	9	10 <u>World Lupus Day.</u>	11 <u>National Eat What You Want Day.</u> <u>Somerset Day.</u>	12 <u>International Nurses Day.</u> <u>National Limerick Day.</u>	13 <u>World Cocktail Day.</u>	14 <u>World Fairtrade Day.</u>
15 <u>National Children's Day.</u>	16 <u>International Day of Living Together in Peace</u> <u>International Boys Day.</u>	17 <u>World Hypertension Day.</u> <u>The International Day Against Homophobia, Transphobia and Biphobia</u>	18 <u>National Numeracy Day.</u> <u>International Museum Day.</u>	19 <u>World IBD Day.</u> <u>Outdoor Classroom Day.</u>	20 <u>World Bee Day.</u> <u>Endangered Species Day.</u>	21 <u>World Meditation Day.</u> <u>World Day for Cultural Diversity for Dialogue and Development</u>
22 <u>World Goth Day.</u>	23 <u>World Turtle Day.</u>	24	25 <u>Towel Day.</u> <u>World Otter Day.</u>	26 <u>Thank A Teacher Day.</u>	27 <u>National Fish & Chip Day.</u>	28 <u>World Hunger Day.</u> <u>Menstrual Hygiene Day.</u>
29 <u>National Biscuit Day.</u>	30 <u>World MS Day.</u>	31 <u>London History Day.</u> <u>World No Tobacco Day.</u>	1	2	3	

@COMPASSIONCB



TO VIEW ALL CALENDARS WITH LINKS PLEASE VISIT
[COMPASSIONCB.ORG.UK/AWARENESSCALENDAR](https://www.compassioncb.org.uk/awarenesscalendar)





@COMPASSIONCB



Month

National Walking Month

Local and Community History Month

Maternal Mental Health Month

Make May Purple/Action On Stroke Month

National Share a Story Month

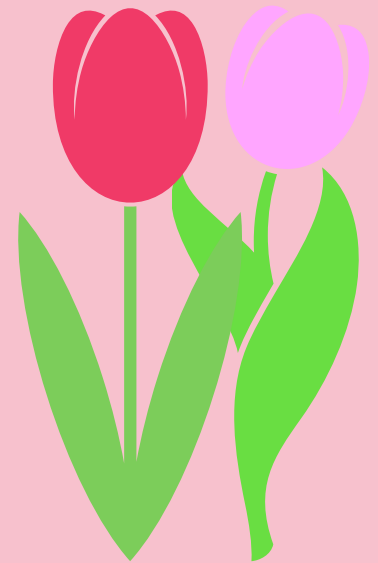
Big Asthma Bake Sale 2022

May Measure Month

Skin Cancer Awareness Month

Tourettes Awareness Month (15 May - 14 June)

National Smile Month (16 May - 16 June)



Weeks

Dying Matters Awareness Week (02 - 06 May)

Time for a Cuppa Week (01 - 08 May)

Maternal Mental Health Week (02 - 08 May)

National Gardening Week (02 - 08 May)

Deaf Awareness Week (02 - 08 May)

Sun Awareness Week (02 - 08 May)

Red Cross Week (06 - 13 May)

National Doughnut Week (07 - 15 May)

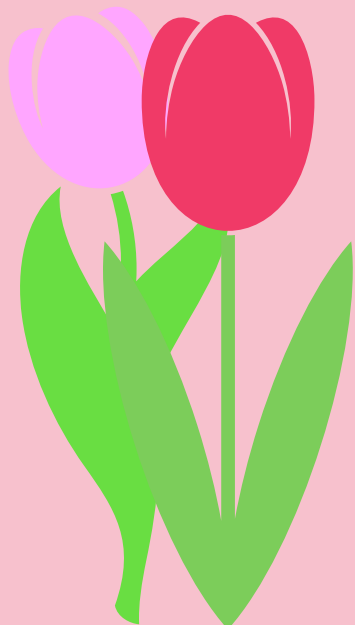
Coeliac Awareness Week (09 - 15 May)

Mental Health Awareness Week (09 - 15 May)

Walk to School Week (16 - 20 May)

Foster Care Fortnight (09 - 22 May)

Action for Brain Injury Week (16 - 22 May)



MAY 2022

TO VIEW ALL CALENDARS WITH LINKS PLEASE VISIT [COMPASSIONCB.ORG.UK/AWARENESSCALENDAR](https://compassioncb.org.uk/awarenesscalendar)